



KoJa

KO JA (CAYMAN) CO., LTD.

INVESTOR CONFERENCE

TICKER(5215)



ABOUT US

Company Profile

FOUNDED : 1975/04

CAPITAL : NTD 643 Million

EMPLOYEES : 2,600

Chairman : Lin, Chih-Feng

CEO : Ho, Han-Ho

Manufacturing President : Vincent Tsai

Core Competencies- QDCST

Q

Quality

Excellent and traceable long-term record

D

Delivery

Extensive production experience

C

Cost

Solid market positioning

S

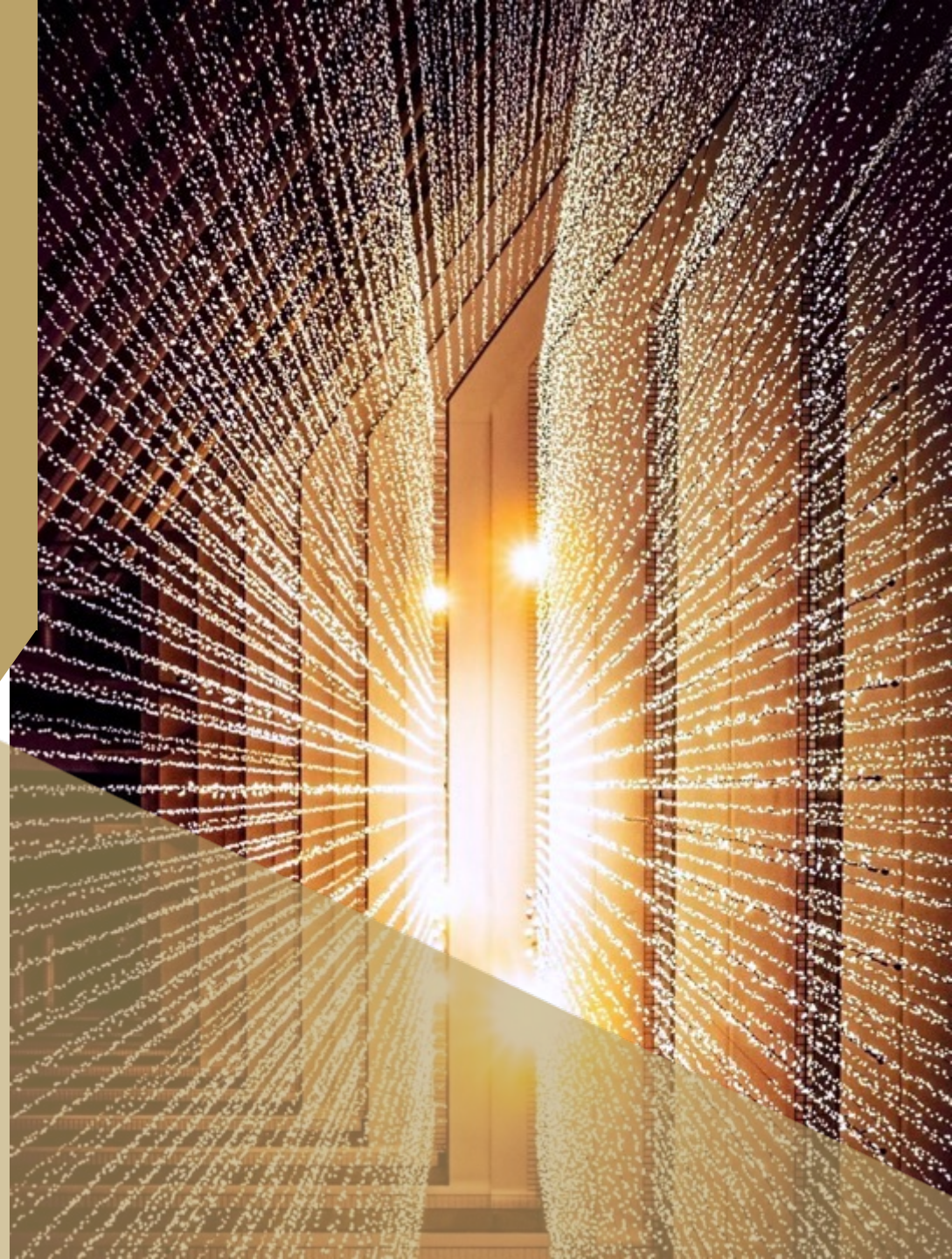
Service

Market adjustment capabilities

T

Technology

R&D and production technology inputs



Plant and Factory



JIAJUN



GODA 1st



GODA 2nd



CHIA TSAI



GODA VIETNAM



BEHOLD



HQ



CHIA CHI

SOLUTION & APPLICATION



POS Mesh



Membrane Switch



RFID

Membrane Switch
Capacitive Membrane

Variable Resistor Membrane
Mini LED Backlight Module



Mini LED



DT & NB Keyboard



Blood Glucose
Test Strip



Home Application



Electrical Instrument

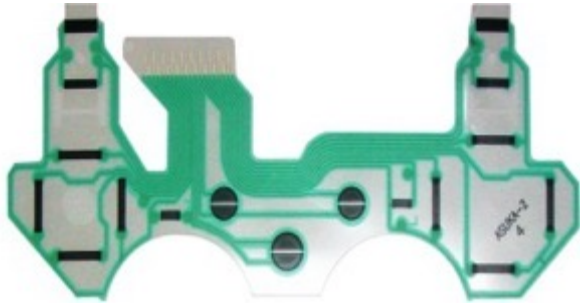


SBR



Doorbell Control

CONSUMER PRODUCT



Variable Resistor Membrane

Game Controller

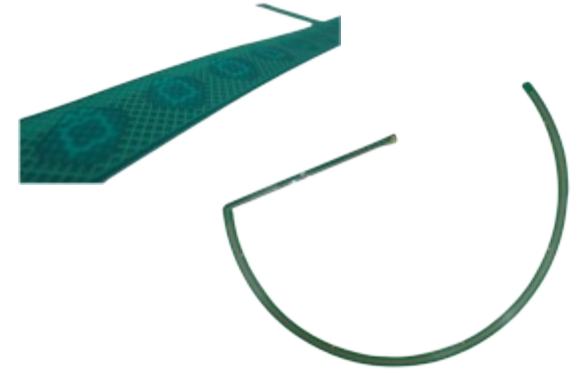


DT & NB Membrane

DT & NB Keyboard

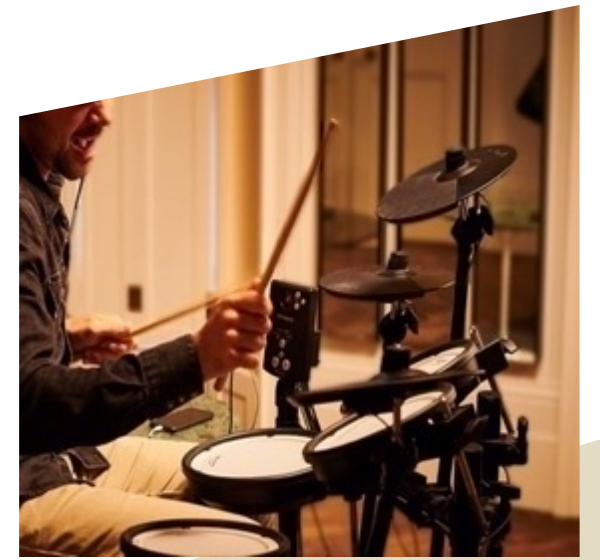


Mini LED Backlight Module

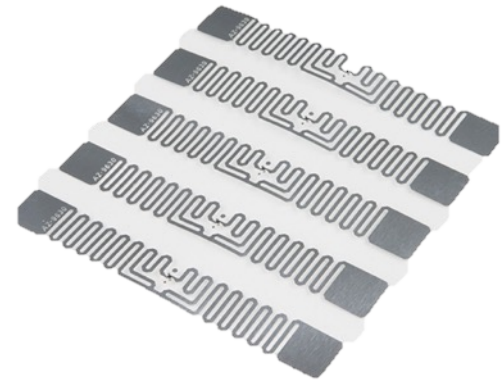


Membrane Switch

Electrical Instrument



INDUSTRIAL PRODUCT



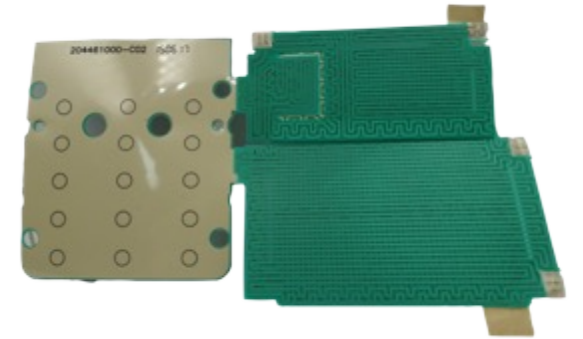
RFID Print Circuit



POS Mesh



POS Mesh



Capacitive Membrane

RFID Tag



POS Protection



Home Security



MEDICAL PRODUCT



Electrocardiography (ECG)



Electroencephalography(EEG)

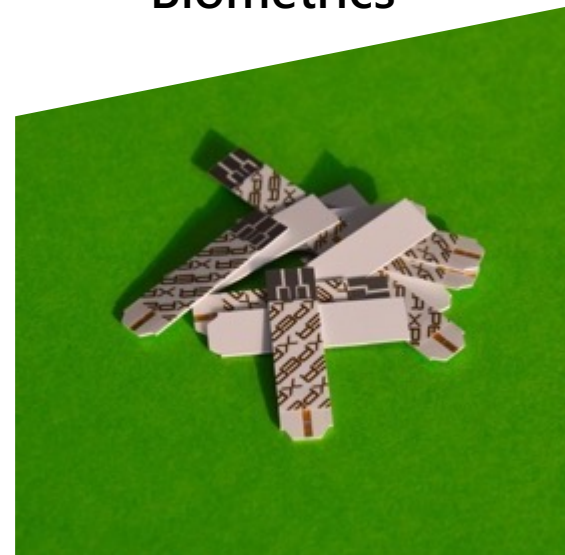


Blood Glucose Test Strip

Biometrics



Biometrics



AUTOMOBILE PRODUCT



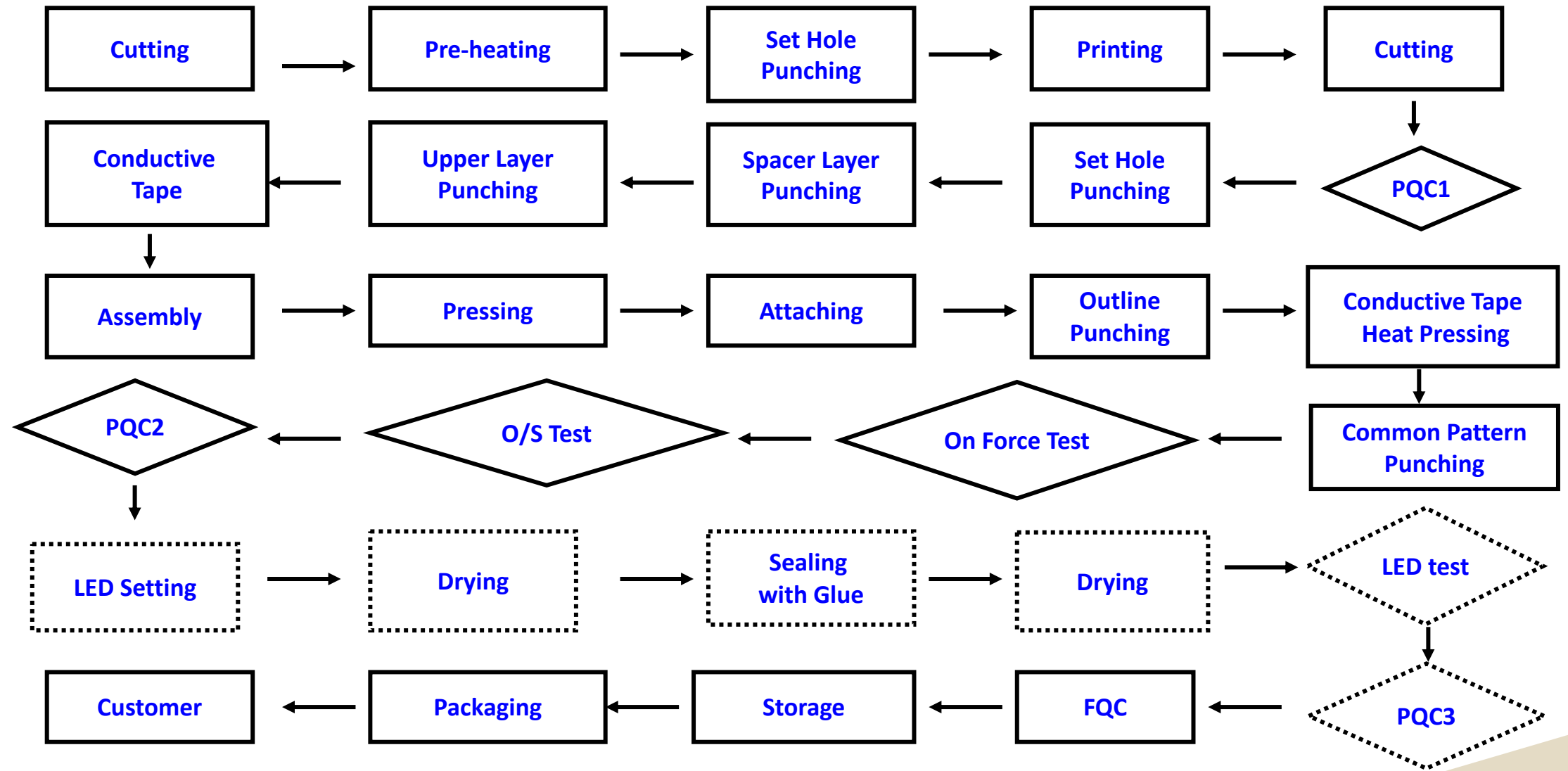
OPDS
Seat Belt Reminder



Transparent Conductive Ink
Capacitive Switch



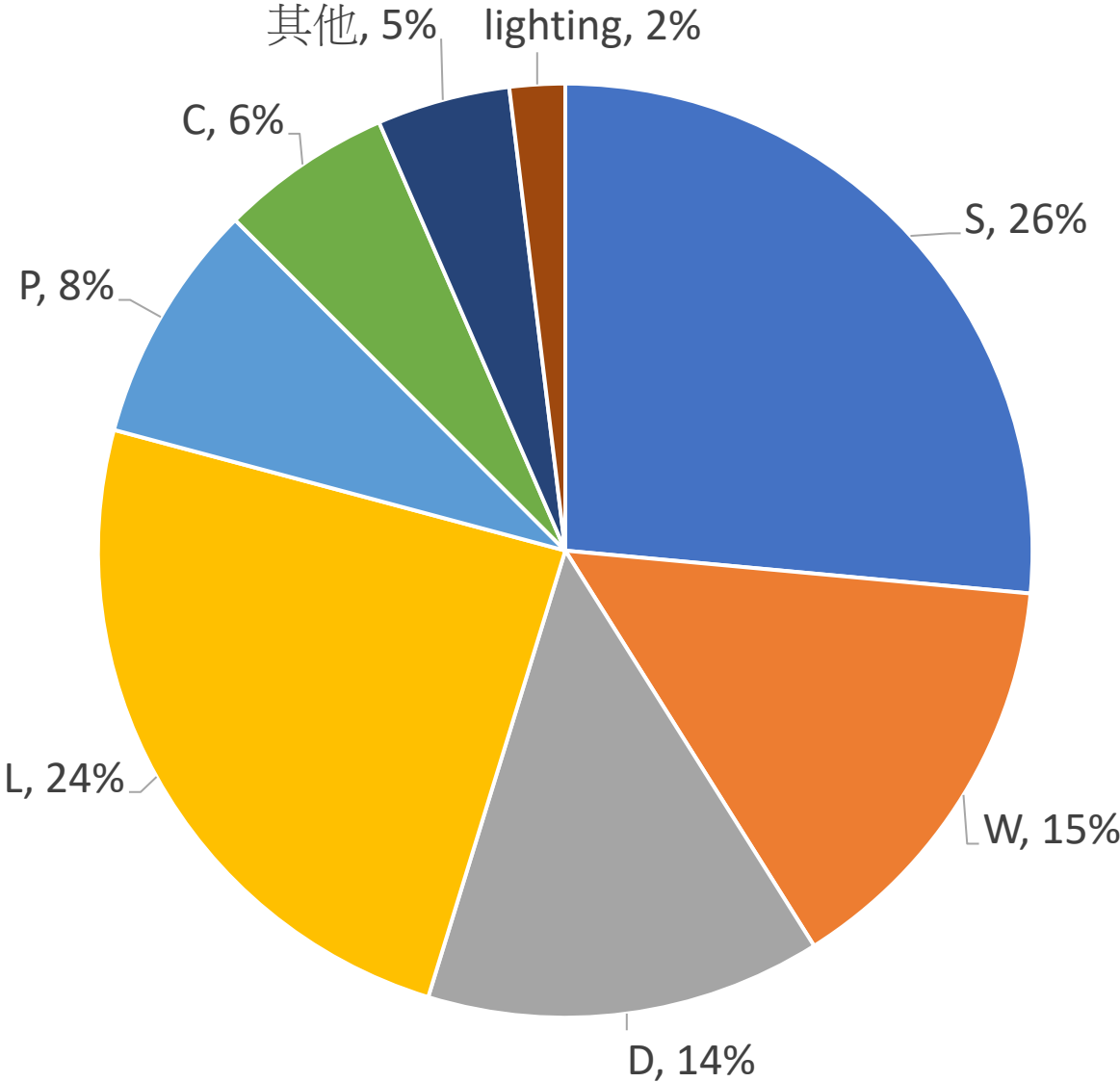
Membrane Production Flow



OUR CUSTOMERS



CUSTOMER DISTRIBUTION



OPERATION OVERVIEW

Internal and external information updates

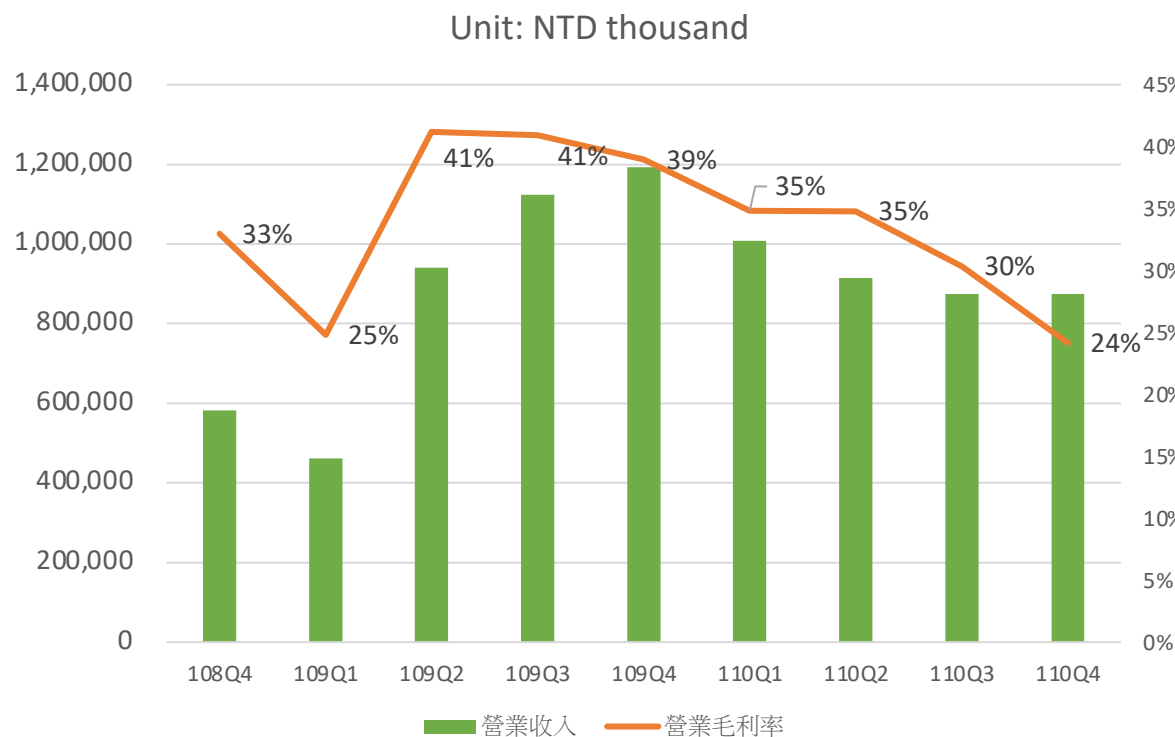
- Capital: To enrich the company's working capital, the cash capital increase was completed in March to raise NT\$525 million
- Products: lighting products used in NB logo and atmosphere lighting sources, revenue share increased to 2%
- Market :
 - COVID-19 has shifted product mix from Chrome to commercial
 - Chip shortage and unreliable container schedule made NB supply chain unstable
 - Market research firm expects laptop growth to start to slow
- Manufacture :
 - Vietnam plant and equipment were ready and began trial production and began prenatal preparations
 - Set-up BEHOLD backlight module production lines and approach new customer
 - Suzhou minimum wages up 13% and social insurance expenses rising
 - Unstable electricity supply in China increased manufacturing cost
 - FY21 AG average price up 22% compared to FY20 and raw material cost goes up

Financial Result

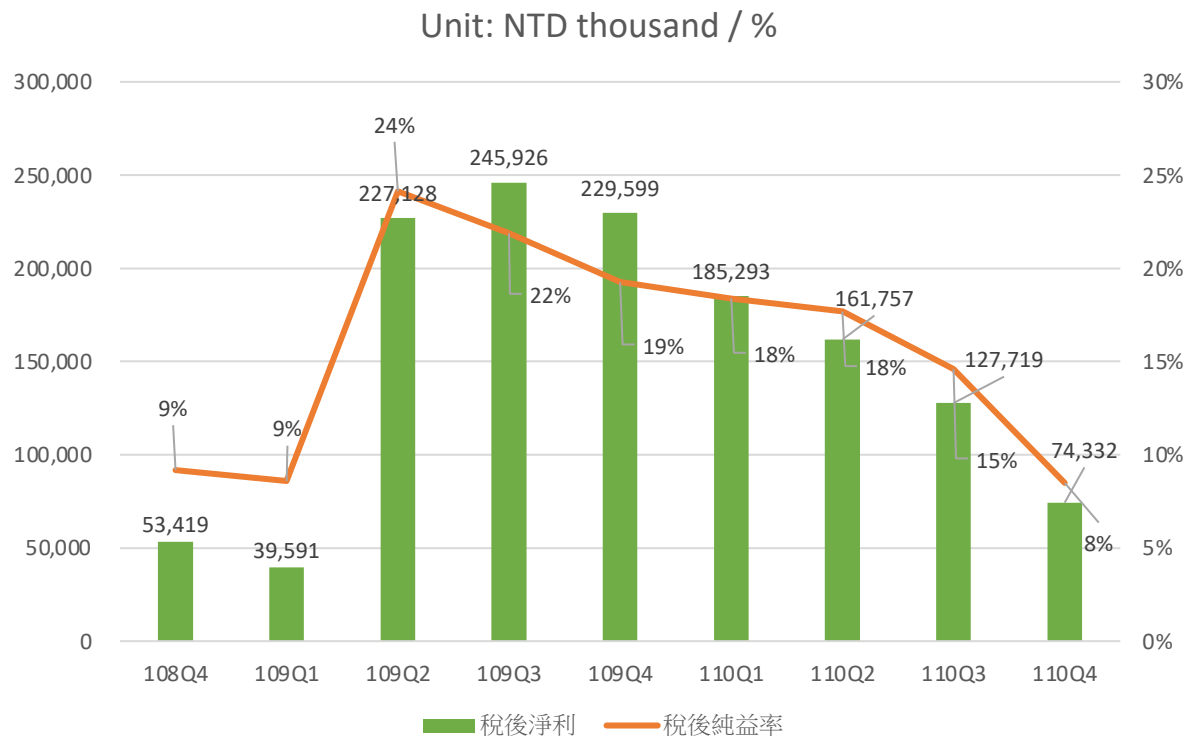
	2021		2020	
	NTD in thousands	%	NTD in thousands	%
Revenue	3,672,956	100	3,718,647	100
Gross Margin	1,146,453	31	1,426,814	38
Operating Income	757,541	21	1,070,522	29
NON-OPE. Income	6,752	0	-47,075	-1
Income Before Tax	764,293	21	1,023,447	28
Net Income	549,101	15	742,244	20
Net Income (parent company)	553,648	15	748,812	20
EPS	8.76		13.11	

FINANCIAL KEY FIGURES

Revenue & Gross Margin



Net Income & Net Income Ratio



ESG

- The Company began to learn about ESG, towards sustainable development
 - CSR :
 - Sponsor an online mapping activity to let the society see the sportsmanship of children with disabilities.
 - Sponsor Little League
 - Sponsor & participate in STP
 - Environment :
 - R&D in using PCR 。
 - 80% from recycled bottle
 - 24% carbon reduction



「科」在你心底的棒球



2021 第四屆LLB挑戰者盃身障兒童公益棒球賽
活動愛心贊助單位



科德關係企業
科嘉國際
KOJA(Cayman)CO.,LTD

主辦單位:



Thank you for your attention

