

The logo for KoJa, featuring the letters 'KoJa' in a white, bold, sans-serif font inside a white rectangular box with a thin black border. The background of the slide is a teal-colored image of a circuit board with gold diagonal stripes.

**KoJa**

**KO JA (CAYMAN) CO., LTD.**

**INVESTOR CONFERENCE**

**TICKER(5215)**



# ABOUT US

## Company Profile

FOUNDED : 1975/04

CAPITAL : NTD 643 Million

EMPLOYEES : 2,100

Chairman : Lin, Chih-Feng

CEO : Ho, Han-Ho

Manufacturing President : Vincent Tsai

Sale Vice-President: Lin, Yi-hong

# Core Competencies- QDCST

Q

**Quality**

Excellent and traceable long-term record

D

**Delivery**

Extensive production experience

C

**Cost**

Solid market positioning

S

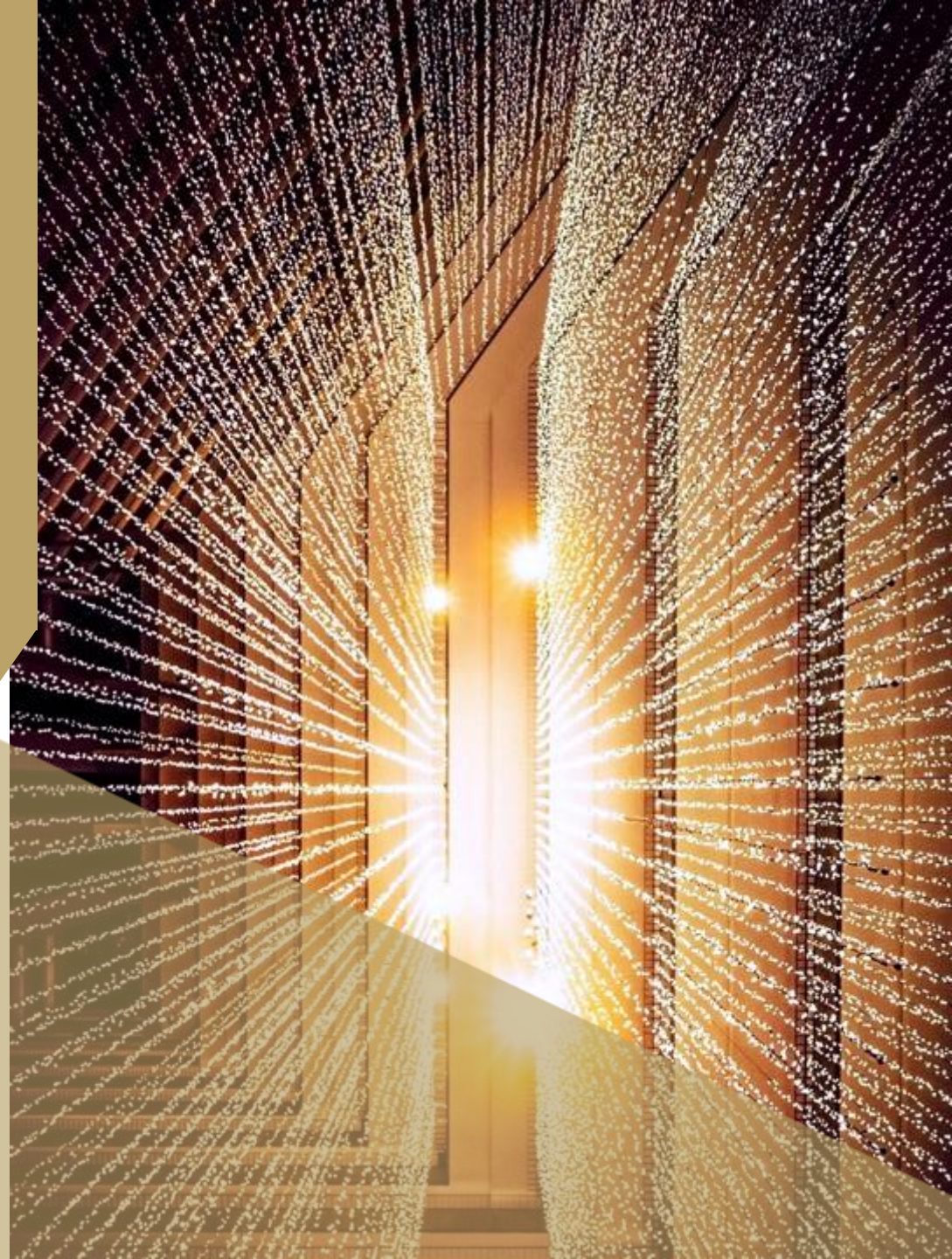
**Service**

Market adjustment capabilities

T

**Technology**

R&D and production technology inputs



# Plant and Factory



**JIAJUN**



**Ruiford Fine Chemical**



**GODA THAILAND**



**GODA VIETNAM**



**BAIJAY**



**HQ**



**GODA 1<sup>st</sup>**



**GODA 2<sup>nd</sup>**



**CHIA TSAI**



**CHIA CHI**

# SOLUTION & APPLICATION



POS Mesh



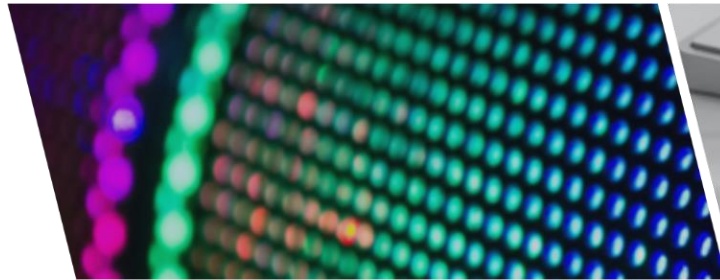
Membrane Switch



RFID

Membrane Switch  
Capacitive Membrane

Variable Resistor Membrane  
Mini LED Backlight Module



Mini LED



DT & NB Keyboard



Blood Glucose  
Test Strip



Home Application



Electrical Instrument



Seat Belt Reminder



Doorbell Control

# Membrane and Keycap Material



Sliver Paste



Hydrophobe



Keycap Paint

# CONSUMER PRODUCT



Variable Resistor Membrane

Game Controller

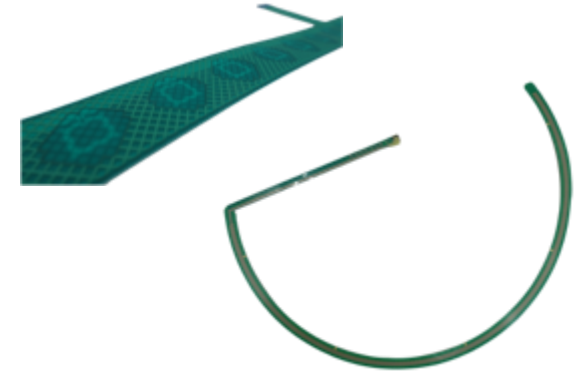


DT & NB Membrane

DT & NB Keyboard



Mini LED Backlight Module

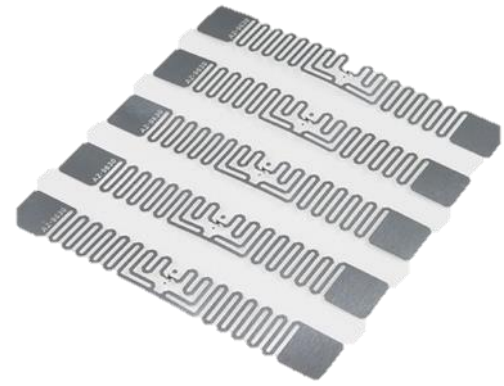


Membrane Switch

Electrical Instrument



# INDUSTRIAL PRODUCT



RFID Print Circuit

RFID Tag

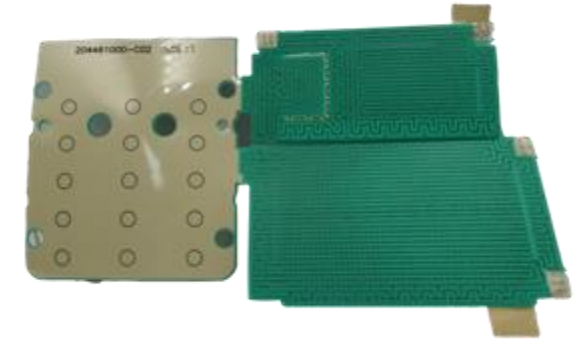


POS Mesh

POS Protection



POS Mesh



Capacitive Membrane

Home Security

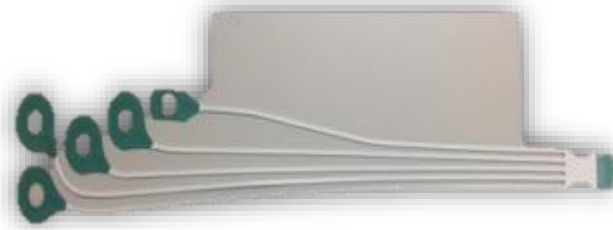




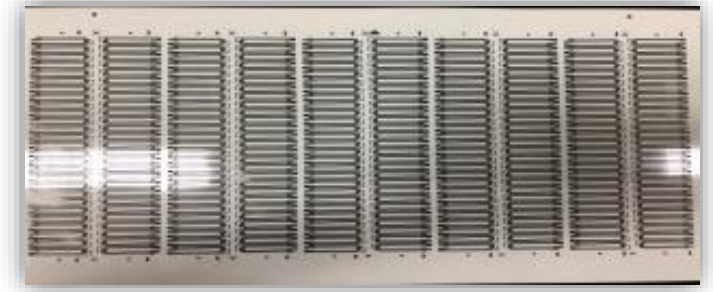
# MEDICAL PRODUCT



Electrocardiography (ECG)



Electroencephalography(EEG)



Blood Glucose Test Strip

Biometrics



Biometrics



# AUTOMOBILE PRODUCT



Seat Belt Reminder

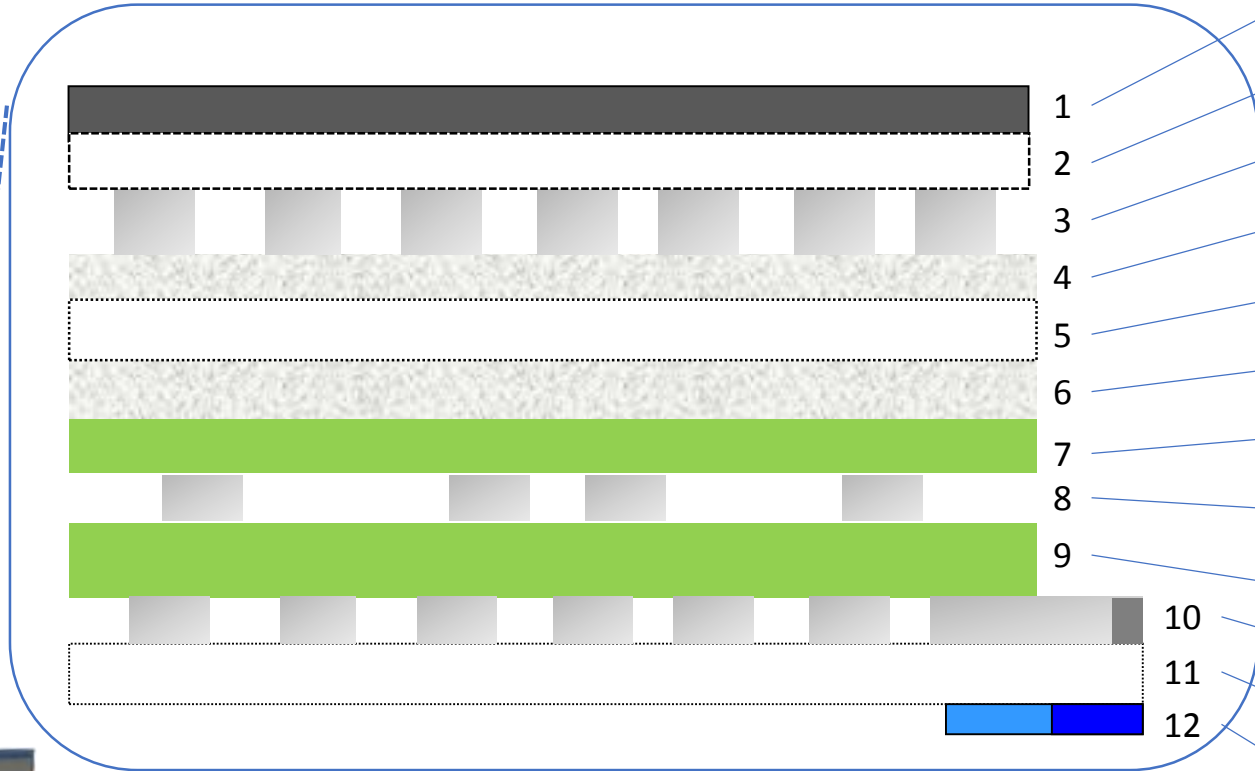


Capacitive Switch

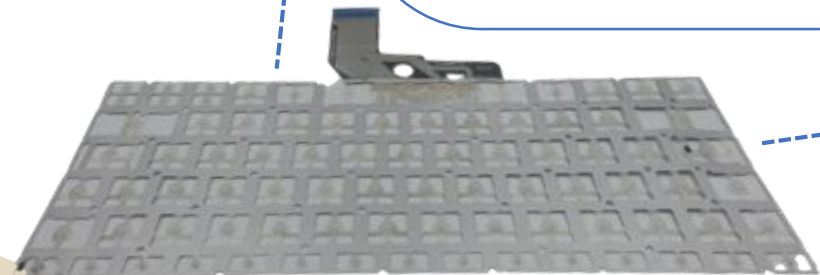


# Membrane Stack Gragh

## Keyboard Membrane

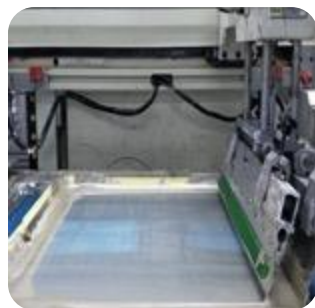


- 1. Print Ink
- 2. PET (upper layer)
- 3. Silver Paste
- 4. Glue
- 5. PET (Spacer)
- 6. Glue
- 7. UV
- 8. AG Jumper
- 9. UV
- 10. Silver Paste & Carbon
- 11. PET (Bottom Layer)
- 12. Stiffener & adhesive

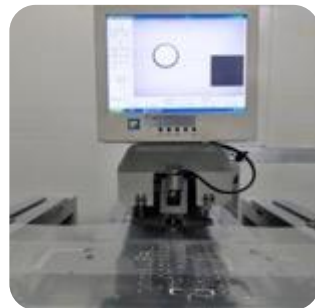




Preheating



RTR Printing



Punch Guide Holes



Paste Protective Mylar



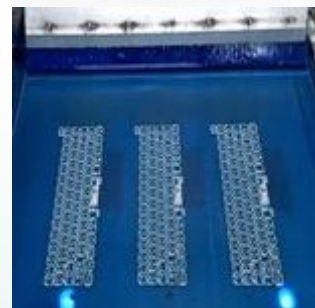
Punch Upper layer



Punch Spacer



Paste Conductive Tape



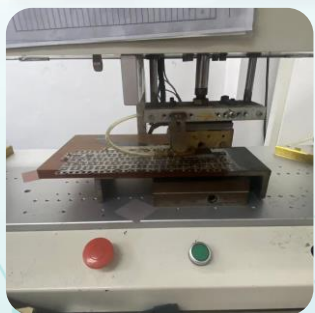
Print Waterproof Glue



Assemble 3 Layers



Lamination 3 Layers



ACF Heat Pressing



Paste Stiffener





Outline Punching



Punching mechanism



1st Open/Short Test



Visual Inspection



Mounting LED



2nd Open/Short Test



CCD Inspecting LED



On make force testing



FQC



Packing



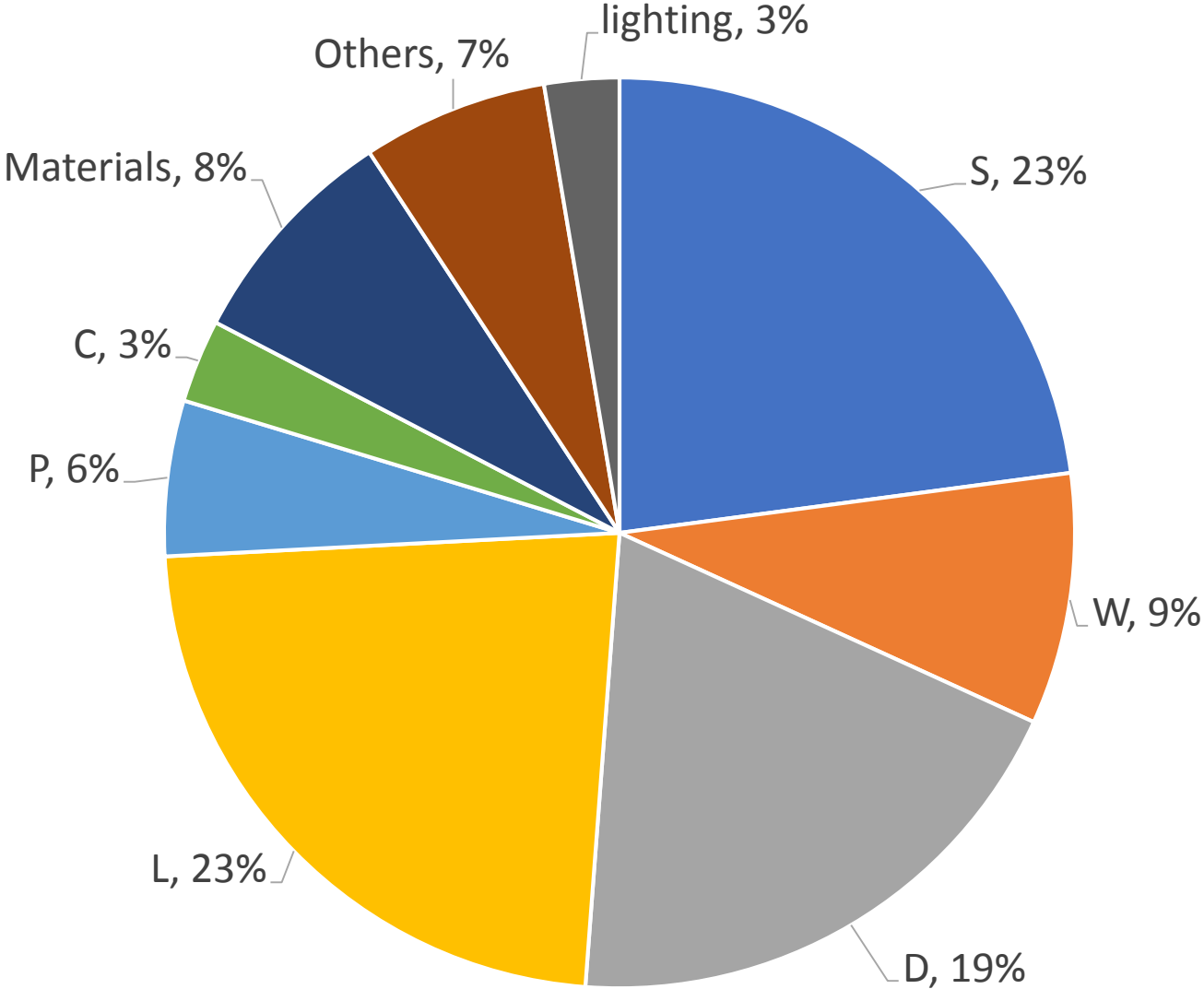
To Warehouse



# OUR CUSTOMERS



# CUSTOMER DISTRIBUTION



# OPERATION OVERVIEW

## Internal and external information updates

- **Material:** Effectively and vertically integrate material manufacturing and formula and enter into the hydrophobic agent, keycap paint and silver paste OEM business. Material sale amount is 8% of total revenue.
- **Lighting:** Lighting product revenue percentage increased to 3%. Luumii obtained US and local notebook brand's access to develop backlight material and continuously shipped to customers.
- **Market:**
  - The upstream material manufacturers of notebook PC are in fierce competition.
  - China PC and notebook market sluggish demand has negative effect to global market demand.
  - AI PC and Black Myth "Wukong" topics lead new market demand to replace existing PC
- **Factory:**
  - Establish God Thailand to shorten membrane lead time in Thailand
  - Goda Vietnam is in mass production and directly ship membrane to keyboard factories in Vietnam.
  - New type of silver paste obtained the customer designated adoption
  - Consolidate production capacity of Goda Suzhou and Chai-Chi, and Dongguan Baijing factory stopped production and operation

## Financial Result

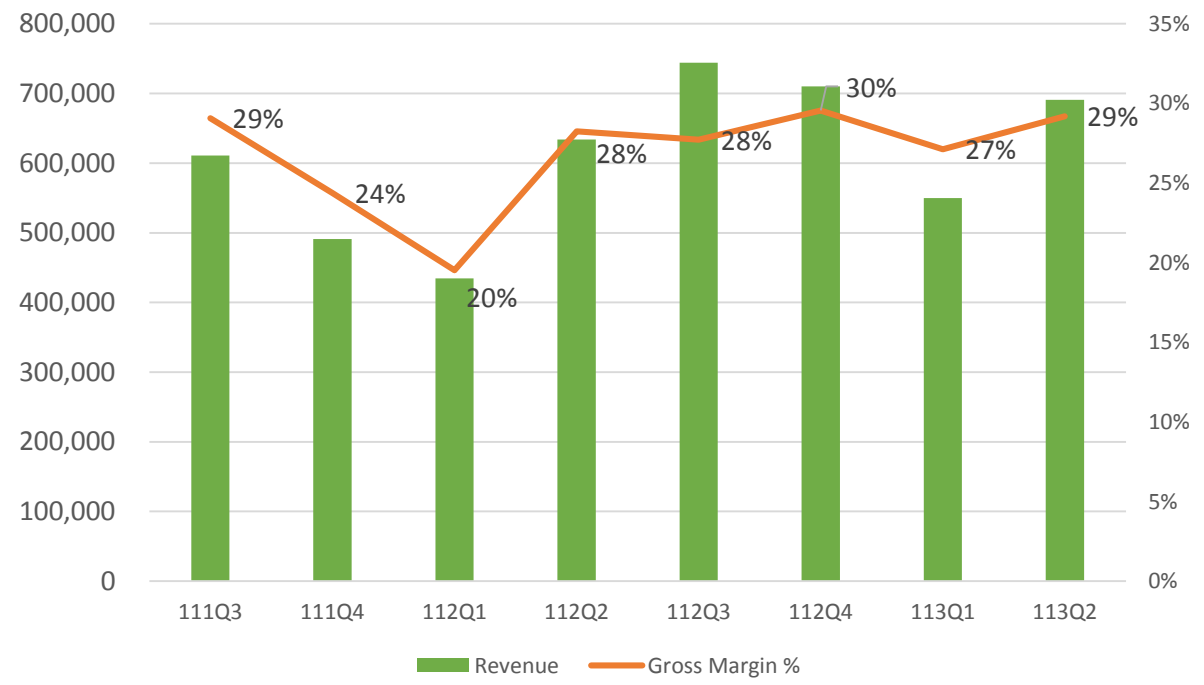
	2024 1st half		2023	
	NTD in thousands	%	NTD in thousands	%
Revenue	1,240,987	100	2,522,854	100
Gross Margin	350,807	28	680,133	27
Operating Income	108,632	9	232,949	9
NON-OPE. Income	64,218	5	93,696	4
Income Before Tax	172,850	14	326,645	13
Net Income	124,164	10	183,685	7
Net Income (parent company)	123,971	10	176,890	7
EPS	1.93		2.75	



# FINANCIAL KEY FIGURES

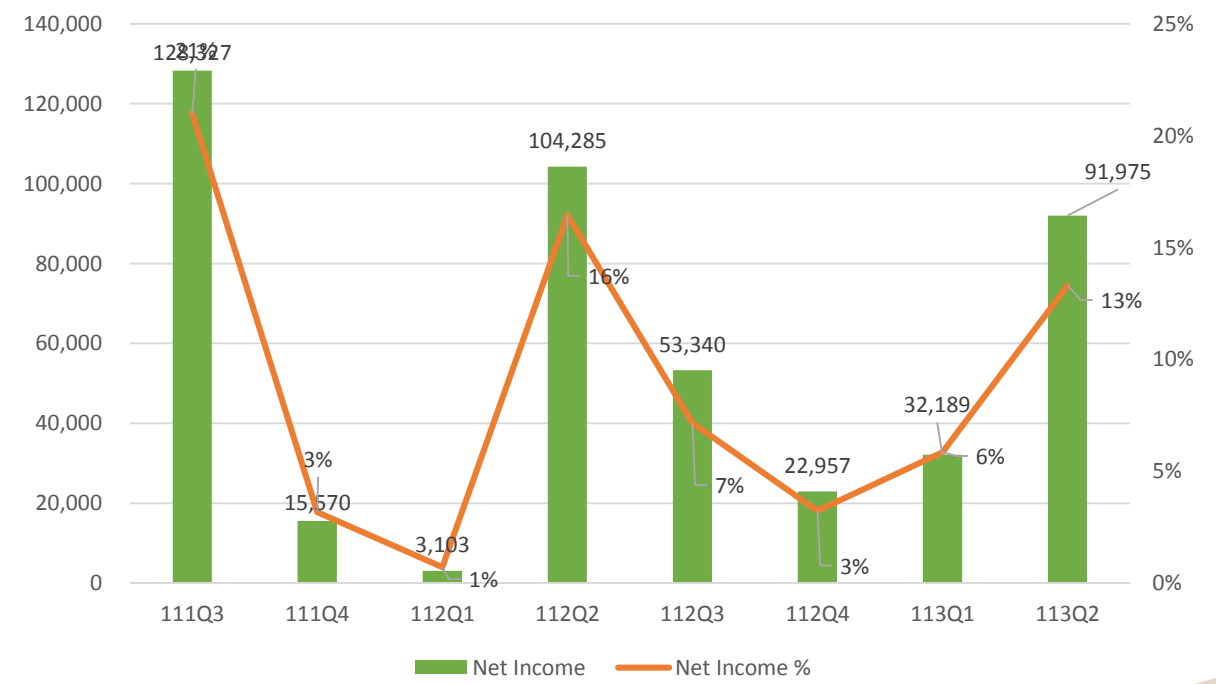
## Revenue & Gross Margin


Unit: NTD Thousand Dollar



## Net Income & Net Income Ratio

Unit: NTD Thousand Dollar / %





Thank you for your attention